

# Tri-Community Resource Guide

Serving Phelan ★ Pinon Hills ★ Wrightwood & the Surrounding Areas





**TRANSITION HABITAT CONSERVANCY**  
Saving Beautiful Places for Future Generations



# Emergency Calls

## Dial 911

### Ambulance • Fire • Paramedic • Sheriff • Highway Patrol

Highway Patrol 760.241.1186  
Non-Emergency 760.255.8750

#### SHERIFF

L.A. County Sheriff 661.945.8466  
San Bernardino Sheriff  
Phelan Deputy 760.868-1006  
CHP-Victorville 760.255.8750  
WeTip 800-78-CRIME 800.782.7463

#### CALTRANS

Cajon Maintenance 760-249.3277  
Road Conditions 800-427-7623  
Wrightwood Roads 760-949-0335  
County Road Repair 909-387-8039  
State Hwys 909-383-4631

#### FIRE STATIONS (Non-Emergency)

Wrightwood 760.249.3206  
Phelan 760.868.4728  
Phelan C.D.F. 760-868.3555  
Pinon Hills 760.868.6565  
Baldy Mesa 760.949-0502  
Oak Hills 760.949-0325  
Big Pines Forest Serv. 760.249-6525

#### UNITED STATES FOREST SERVICE

Big Pines 760.249.3504  
Mormon Rocks 76.249.3177  
Pinon Hills 760.868.3603  
Valyermo 661.944.2187

#### GOVERNMENT AGENCIES

Air Pollution Control 800.635.4617  
Animal Care & Control 800.472.5609  
Bark Beetle 909.472.5609  
Code Enforcement 760.995-8140  
Illegal Dumping 760.243.8100

Hazardous Spill 800.338.6942  
Hazardous Waste 760.645.9228  
Service Area 56 760.249-3206  
Service Area 64 760-947-5790  
Service Area 70 760-387-5940  
USFS Information 661.944.2187  
Vehicle Abatement Reporting 909.387.2900  
909.387.3043

#### ELECTED OFFICIALS

President Donald J. Trump (R)  
The White House  
1600 Pennsylvania Avenue  
Washington, D.C. 20500  
Phone: (202) 456-1414

U.S. Senate  
Kamala D. Harris (D)  
112 Hart Senate Office Building  
Washington, D.C. 20510  
Phone (202) 224 - 3553  
Fax (202) 224 - 2200  
501 I Street, Suite 7-800  
Sacramento, CA 95814  
Phone (916) 448 - 2787  
Fax (202) 228 - 3865  
11845 West Olympic Boulevard, Suite 1250W  
Los Angeles, CA 90064  
Phone (310) 231 - 4494  
Fax (202) 224 - 0357  
[harris.senate.gov/contact](http://harris.senate.gov/contact)

Dianne Feinstein (D)  
331 Hart Senate Office Bldg  
Washington, D.C. 20510-0504  
11111 Santa Monica Blvd.,  
Suite 915  
Los Angeles, CA 90025

(202) 224-3841  
Fax (202) 228-3954  
(310) 914-7300  
[feinstein.senate.gov/email.html](http://feinstein.senate.gov/email.html)

U.S. House of  
Representatives  
8th Congressional  
Paul Cook  
1222 Longworth House Office Bldg  
Washington, D.C. 20515-0508  
202-225-5861  
202-225-6498  
<https://cook.house.gov/contact/email-me>  
[http://cook.house.gov/  
@RepPaulCook](http://cook.house.gov/@RepPaulCook)

25th Congressional  
Katie Hill (D)  
1023 Longworth House  
Office Building  
Washington DC  
202-225-1956

CALIFORNIA:  
Gavin Newsom Governor (D)  
State Capitol  
Sacramento, California 95814  
916- 445-2841/  
Fax: 916- 445-4633

State Senator  
23rd District  
Mike Morrell (R)  
1801 Orange Tree Lane, Suite 240  
Redlands, CA 92374  
(909) 919-7731  
State Capitol room 3056  
Sacramento, CA 95814  
(916) 651-4023  
f.ax (916) 651-4923

State Assembly  
36th District  
Assembly Member Tom Lackey (R)  
PO Box 942849 Room 4009  
Sacramento, CA 94249-0036

District Office  
41319 12th Street West Suite 105,  
Palmdale, CA 93551  
661-267-7636  
<http://ad36.assemblygop.com>

33rd Assembly District  
Assemblyman Jay Obernolte (R)  
Capitol Hill  
Room 4116 Sacramento, CA 94249-0040  
916-319-2033  
District Office  
15900 Smoke Tree Street, # 125  
Hesperia, CA 92345  
(760) 244-5277  
Email: [assemblymember.obernalte@  
assembly.ca.gov](mailto:assemblymember.obernalte@assembly.ca.gov)

#### LOCAL GOVERNING BOARDS

San Bernardino County  
First District Supervisor  
Robert A. Lovingood  
385 North Arrowhead Avenue,  
5th Floor, San Bernardino,  
CA 92415  
(909) 387-4830  
(760) 243-8400  
Fax (760) 995-8105  
(800) 472-8597  
Victorville Office:  
12474 Cottonwood Ave #A  
Victorville, CA

Phelan Pinon Hills  
Community Service District (CSD)  
4176 Warbler Road, P.O. Box 29049  
Phelan, CA 92371  
(760) 868-1212  
Fax (760) 868-2323  
website: <http://www.pphcsd.org/>

Wrightwood Community Services District  
1275 HWY 2, P.O. Box 218,  
Wrightwood, CA 92397  
(760) 249-3205

## SOCIAL SERVICES

Aging and Adult Services	760.243.6637
Child Protective Services	760.243.6640
Abuse Reporting	800.827.8724
Domestic Violence	760.949.4357
Sexual Assault/Rape	909.886.4889
Food Stamps/Medical	760.243.8400
Saint Vincent De Paul	760.868.4342

## UNITED STATE POST OFFICES

Phelan: 9782 Clovis	760.868.0797
Piñon Hills: 10353 Oasis	760.868.3493
Wrightwood: 1440 Hwy2	760.249.8882

## UTILITIES

CRR Trash Collection	800.336.0396
Landfill Office	760.243.8774
So. Cal Edison	800.655.4555
So. Cal. Gas	800.427.2200
Phelan Water	760.868.1212
Sheep Creek Water	760.868.3755
Golden State Water	760.249.3824
Propane:	
Amerigas	760.246.6200
Phelan Gas	760.953.2206
Ferrel Gas	760.868.3114
Kelly Gas	760.246.3714
Proflame	661.246.6200
Telephone	
Frontier Communication	800.483.3000
Internet	
UIA	760.530.6113

## HOSPITALS, CLINIC

Desert Valley Hospital	760.241.8000
Family Medical Clinic	760-868.1990
Heritage Medical Clinic	760-868-6622
Public Health Clinic	760.956.4400
Public Health Children	760.956.4418
Loma Linda Univ	909.558.4000
SBC Comm. Hospital	909.887.6333
SBC Co. Med. Cntr	909.580.1001
SBC Behavioral Hlth	909.580.2814
St. Mary Desert Hosp.	760.424.2311

## SCHOOLS, COLLEGES, LIBRARIES

Snowline Joint United School District	
Business	760.868.5817
Baldy Mesa Ele.	760.868.2500
Chaparral High Sch.	760.868.5400
Eagle Summit Sch.	760.868.3442
Quail Valley M.S.	760.868.2623
Phelan Ele. Sch.	760.868.3252
Pinon Hills Ele.Sch.	760.868.4424
Piñon Mesa M.S.	760.868.3126
Serrano H.S.	760.868.3222
Vista Verde Ele. Sch.	760.662.5650
Wrightwood Ele. Sch	760.249.5828
Snow Day Information	760.858.5817
Snowline Transport.	760.868.6739
Excelsior Charter	760.563.3980
Heritage Charter	760.868.2422
California State Univ. S.B.	909.537.5000
Victorvalley Comm. College	760.245.4271

## LIBRARIES

PHELAN:9800 Clovis Rd., Phelan	760.868.3053
WRIGHTWOOD:6011 Pine St.	760.249.4577

## CHURCHES

Bahai Faith	760.249.5109
Comm.United Methodist	760.249-3084
Foursquare of Living Water	760.868.4081
Evergreen Lutheran	760.949.9620
Harvest Christian Center	760.868.6806
High Desert Baptist Church	760.868.5084
Hillside Community	760.249.5007
Our Lady of the Snows	760.868.4342
New Life Church	760.868.5455
Phelan Community	760.868.6335
Sunrise Church	760.249.3832
St. Junipero Serra	760.868.4342
The Door Ministry	760.985.9650
Tri-Comm Alliance	760.249.5007
Village Community	760.249.6924

## ORGANIZATIONS

Adult Children of Alcoholic	760.868.3634
Alcoholic Anonymous	760.242.9292

American Red Cross 760.245.6511  
 A.Y.S.O. 760.868.4875  
 Chamber of Commerce  
 Phelan 760.868.3291  
 Piñon Hills 760.868.5801  
 Wrightwood 760.249.4320  
 Disaster Preparedness Team  
 Phelan/Piñon Hills 760.868.3075  
 Wrightwood 760.249.5385  
 Piñon Hills Seniors Group 760.868.5058  
 Boy Scouts of America Wrightwood  
 760.249.5785  
 Girl Scouts of San Gorgonio Snowline  
 909.307.6555  
 Helping Hands: email-  
 helpinghandswrightwood@yahoo.com  
 PO Box 2742 NONE  
 Kiwanis Club 760.868.5125  
 Snowline Players 760.249.3171  
 TIMBERLINE LIONS 760.249.3245  
 Phelan Pinon Hills CERT 909.732-0360  
 St. Vincent de Paul 760.868.4342  
 Timberline Lions 760.249.3245  
 Transition Habitat Conservancy  
 e. infor@transitionhabitat.org.  
 PO Box 721300 760.868-1400  
 Tri-Comm Toy Box 760.249.6589  
 Veterans of Foreign Wars 760.868.5311  
 Wrightwood CERT 760.800.1933  
 Wrightwood Comm. Bldg 760.249.3205  
 Wrightwood Disaster Preparedness Team  
 760.249.5931  
 Wrightwood Fire Safe Co. 760.249.3249  
 Wrightwood Historical 760.249.4650  
 Wrightwood Little League 760.249.5569  
 Wrightwood Property Owners Assoc.  
 760.249.3163  
 Veterans of Foreign Wars Post 9415  
 760.868.1999  
 Volunteers of Angeles National Forest  
 760.249.6737

**MOTOR / VOTER INFORMATION**

DMV Drivers' License 800.777.0133  
 Voters Information 909.387.8683

Big Pines Recreation area  
 Information Center 760.249.3504  
 Camp Big Pines AYE 760.249.5319  
 P.O. Box 1177, Wrightwood  
 Camp Comiche 760.249.5319  
 P.O. Box 2, Wrightwood  
 Camp Coulter Pines 760.249.6193  
 P. O. Box 2828 Wrightwood  
 Camp Mariastella 760.249.3530  
 Camp Elk 760.249.3822  
 Lions Camp Teresita Pines 760.249.3580  
 Wilderness Camp 760.249.3580  
 Grassy Hollow Visitors Ctr 626.821.6737  
 Hawthorne Youth Camp 760.249.3661  
 Verdugo Pines Bible Camp 760.249.3532  
 Wrightwood Camp 760.249.3453  
 Table Mtn Camp 661.944.2187  
 Camp Kare 760.249.3807  
 Camp Indian Springs 760.249.6949  
 Episcoal Camp of WWD 760.249.3615

**RADIO STATIONS THAT BROADCAST  
 ROAD CONDITIONS**

VICTORVILLE & HIGH DESERT	MOUNTAINS & LAS VEGAS
KAVR 96 AM	KOOL 960 AM
KVVQ 910 AM	KRXV 98.0 FM
KCIN 1590 AM	KQLH 95.1 FM
KZXY 102.3 FM	KHWY 99.0 FM
KISS 103.1 FM	KIX 106.0 FM
KATJ 100.7 FM	



# PHELAN

---

## CHAMBER OF COMMERCE

Where Business  
Is A Pleasure

*"Spread across the desert foothills of the eastern San Gabriel Mountains, between elevations of 3,000 and 4,000 feet is Phelan California, an unincorporated community in San Bernardino County which enjoys over 350 sunny and beautiful days each year."*

The Phelan Chamber of Commerce is a non-profit, voluntary membership organization for business and professional leaders and individuals who are committed to promoting business and fostering economic and community development, educational opportunities and partnerships to improve the rural lifestyle of Phelan, California.

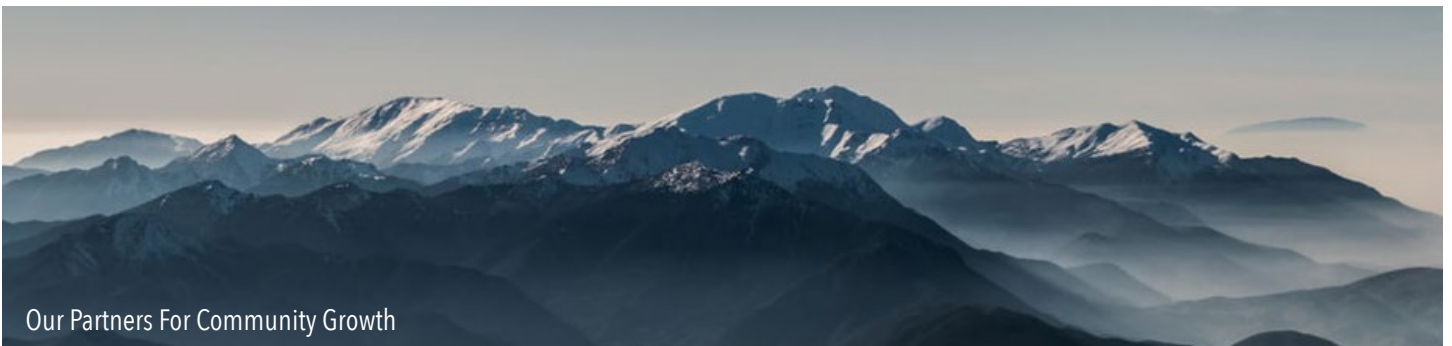


The programs of the Phelan Chamber of Commerce are designed to help you grow your business, provide networking opportunities and to build a strong brand within the community. Chamber programs include ribbon cutting ceremonies for new businesses, grand opening/reopening events, mixers, a monthly Chamber luncheon, Public Policy Council, Small Business Council, Chamber Ambassadors, the Miss Phelan Pageant and annual scholarship opportunities for local youth.

Events at the Phelan Chamber of Commerce are designed to benefit a variety of business professionals and bring the community together. Events include Phelan Family Phun Days, an annual Easter Egg Hunt, Saturday In the Park Concert Series, Safe and Sane Trunk or Treat Halloween and the Holiday Angel Tree Giving Event.



The Phelan Chamber of Commerce proactively serves as the business community advocate to strengthen the business climate in Phelan. It is our commitment to work together to solve the challenges that business leaders encounter, to inspire and connect community leaders in support of business-friendly initiatives, and to seek out and raise the next generation of local leadership. When you join the Chamber, you become an essential thread in the fabric of our community.



Our Partners For Community Growth









# Welcome to Piñon Hills

*“Where the desert meets the mountains.”*

**IN PIÑON HILLS  
BEAUTY CAN BE FOUND EVERYDAY.**

The Pinon Hills Chamber of Commerce organized for the purpose of advancing the economic and civic wellbeing of Pinon Hills and its trade areas.

**Find us!**

34.4443° N, 117.6497° W  
10405 Mountain Road  
Pinon Hills, CA 92372

**PINON HILLS  
CHAMBER OF COMMERCE**





# District Directory

## District Office and Departments

4075 Nielson Road, Phelan, CA 92371  
District Office: (760) 868-5817  
Mailing Address:  
PO Box 296000  
Phelan, CA 92329-6000

Ext. 2 - Transportation and Bus Pass info  
Ext. 3 - All Student Services  
Ext. 4 - Human Resources and Personnel  
Ext. 5 - Business Services (including Payroll)  
Ext. 6 - District Support Services (Maintenance, Purchasing, Reprographics, and Nutrition)  
Ext. 7 - Technology  
Ext. 8 - School Police  
Ext. 9 - Superintendent Office

## High School

**Serrano High School**  
9292 Sheep Creek Road, Phelan, CA 92371  
Phone: (760) 868-3222  
Fax: (760) 868-3803

## Middle Schools

**Piñon Mesa Middle School**  
9298 Sheep Creek Road, Phelan, CA 92371  
Phone: (760) 868-3126  
Fax: (760) 868-3033

**Quail Valley Middle School**  
10058 Arrowhead Road, Baldy Mesa, CA 92371  
Phone: (760) 868-2623  
Fax: (760) 949-3663



## Elementary Schools

### **Baldy Mesa Elementary School**

10376 Baldy Mesa Road, Baldy Mesa, CA 92392  
Phone: (760) 868-2500  
Fax: (760) 949-2770

### **Piñon Hills Elementary School**

878 Mono Road, Piñon Hills, CA 92372  
Phone: (760) 868-4424  
Fax: (760) 868-1028

### **The Heritage School**

9542 Wilson Ranch Road, Phelan, CA 92371  
Phone: (760) 868-2422  
Fax: (760) 868-0589

### **Vista Verde Elementary School**

13403 Vista Verde Street, Victorville, CA 92392  
Phone: (760) 662-5650  
Fax: (760) 662-5659

### **Phelan Elementary School**

4167 Phelan Road, Phelan, CA 92371  
Phone: (760) 868-3252  
Fax: (760) 868-1044

### **Wrightwood Elementary School**

1175 Hwy 2, Wrightwood, CA 92397  
Phone: (760) 249-5828  
Fax: (760) 249-5820

## Non-Traditional Schools

### **Chaparral High School**

9258 Malpaso Road, Phelan, CA 92371  
Phone: (760) 868-5400  
Fax: (760) 868-4725

### **Eagle Summit Community Day School**

3919 Nielson Road, Phelan, CA 92371  
Phone: (760) 868-3442  
Fax: (760) 868-5674

### **Snowline Academy**

9292 Sheep Creek Road (located on Sunnyslope Rd. above Serrano High School) Phelan, CA 92371  
Phone: (760) 868-6277  
Fax: (760) 868-5674  
Adult Education

### **Snowline Adult School**

9298 Sheep Creek Road (Located behind Pinon Mesa), Phelan, CA 92371  
Phone: 760-868-5817 ext. 10390

# Get More at the Farmers Market

Use your CalFresh benefits, WIC and Senior Farmers Market coupons to stretch your dollar\* at these participating Farmers Markets

## Get More With Market Match

Stretch your dollar. Use your CalFresh benefits at Farmers Markets that accept EBT to increase your buying power. If you spend \$10 using your EBT card, you get an additional \$10 Market Match\* at participating markets.

## Get Fresher Produce

It's farm-to-table fresh. You'll feel great about serving your family the freshest California grown food!

These markets accept CalFresh, WIC and Senior Farmers Market coupons, AND participate in Market Match!

### Saturday Morning Farmers Market

100 E. Redlands Blvd., Redlands, CA 92373  
Saturdays, 8 a.m. – 11 a.m.

### Redlands Market Night

101 E. State St., Redlands, CA 92373  
Thursdays, 6 p.m. – 9 p.m.

### Phelan Farmers Market

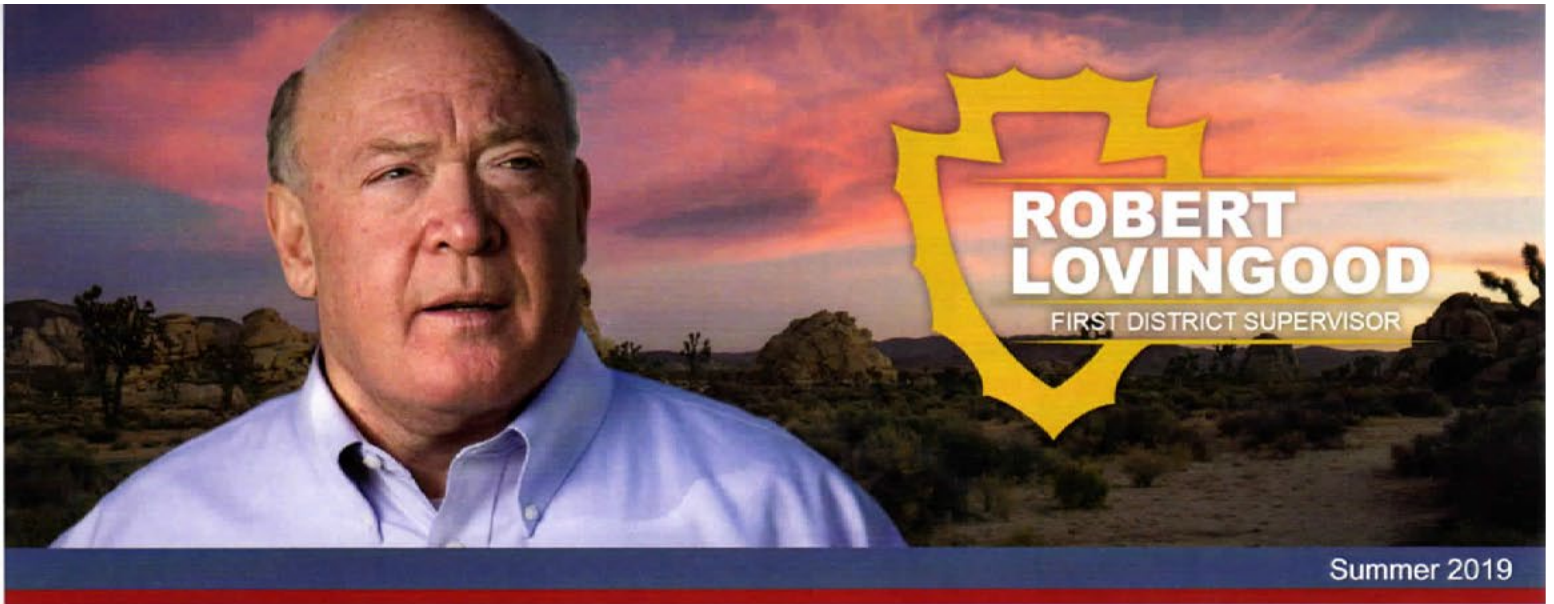
4128 Warbler Rd., Phelan, CA 92371  
Mondays, 2 p.m. – 6 p.m. (Mar. – Nov.)  
Mondays, 2 p.m. – 5 p.m. (Nov. – Mar.)



\*Market Match is only available at participating Farmers Markets. CalFresh benefits are matched dollar-for-dollar, up to \$10 per family per market day, at participating markets only.

This material is funded by USDA's SNAP-Ed—an equal opportunity provider and employer.





Summer 2019

## County-wide crime suppression operations net 960 arrests, \$14.2 million in drugs

The San Bernardino County Sheriff's Department conducted a ten-month series of crime suppression operations following a \$1 million special allocation approved by the Board of Supervisors last year. The operations netted 960 arrests, confiscation of \$14.2 million in illegal drugs and freed 49 victims of human trafficking.



"I have been a strong advocate of these crime suppression operations," Supervisor Lovinggood said. "These are focused, highly effective and cost efficient tools to fight criminals. On behalf of the First District, my thanks to Sheriff McMahon and everyone involved."

The funding expanded the work of the Sheriff's Valley Gang Team, Desert Gang Team, the Human Trafficking Task Force, and others. The Sheriff's Department targeted criminal street gangs, their gang members and leadership, mid-level narcotics dealers, gun dealers/brokers, and other violent criminals who prey on the citizens of San Bernardino County.

## Juvenile Intervention Program puts teens back on track

The Sheriff's Juvenile Intervention Program (JIP) was designed to show troubled teens the reality of incarceration. Juveniles have misconceptions about what life in jail is truly like. They see incidents such as police pursuits, gang violence and drive-by shootings, and do not realize the consequences of criminal behavior. The JIP Program is geared toward juveniles who have begun to engage in negative behaviors and attitudes or are heading down a path of alcohol, drugs, gangs or violence. Families participating in the JIP Program must live in San Bernardino County, and juveniles must be between 13 and 17 years of age. Juveniles applying



[www.sbcounty.gov/bosd1](http://www.sbcounty.gov/bosd1)

## CHP offers free *Start Smart* class for young drivers

The National Highway Traffic Safety Administration reports the leading cause of death for Americans 15 to 20 years old is motor vehicle collisions. The California Highway Patrol's Start Smart program is aimed at helping newly licensed and future teenage drivers understand the critical responsibilities of driving and understand that while accidents do happen, collisions are 100 percent preventable. To register your teenager for this free 2 hour class at the Victorville CHP office, call the CHP at 760.241.1186.



### Follow us on Facebook

Follow Supervisor Lovingood on Facebook. That's where you'll find District news, updates and upcoming events. Visit Facebook.com/Robert.Lovingood.7. Subscribe to email updates at [https://public.govdelivery.com/accounts/CASANBE/subscriber/new?qsp=CODE\\_DISTRICT1](https://public.govdelivery.com/accounts/CASANBE/subscriber/new?qsp=CODE_DISTRICT1)

## More ways to contact County Code Enforcement

County Code Enforcement administers programs designed to protect the public's safety, welfare, and property value through enforcement of San Bernardino County ordinances and State/Federal laws relating to land use, zoning, housing, public nuisances and vehicle abatement within the unincorporated areas of the county. Code Enforcement may be reached at (760) 995-8140 or (909) 884-4056. Complaints may be filed online at <http://cms.sbcounty.gov/lus/CodeEnforcement.aspx>.

A smartphone app called SBCode can also be used to file complaints.

## Juvenile Intervention Program

(continued from page 1)

for the program must not have been to Juvenile Hall or be currently involved in any ongoing criminal proceedings. The participant must have a parent or guardian willing to attend the JIP Program. For more information, call Sheriff's Public Affairs at 909.387.3767 or visit [www.SBCounty.gov/sheriff](http://www.SBCounty.gov/sheriff).

## Inland Empire wage growth

(continued from page 2)

aid Robert Kleinhenz, Executive Director of Research at the Center for Economic Forecasting. "At the same time, the tight regional labor market bodes well for continued wage gains to Inland Empire workers as businesses across Southern California compete to fill open positions."

## Scammers impersonate the Social Security Administration

Your Social Security number is an important key for an identity thief. Scammers want it, and they think of all sorts of ways to trick you into giving it away.



If you get a phone call or are directed to a website other than [ssa.gov](http://ssa.gov) that is claiming to be associated with the Social Security Administration, don't respond. It's most likely a scam. Here are some tips:

- Don't give the caller your information. Never give out or confirm sensitive information – like your bank account, credit card, or Social Security number – unless you know who you're dealing with.
- Don't trust a name or number. Con artists use official-sounding names to make you trust them.
- Check with the Social Security Administration. Call 800.772.1213 to verify.
- To report fraud, call the Social Security Administration's Fraud Hotline at 1.800.269.0271.

## General Atomics breaks ground on \$40 million expansion in EI Mirage

General Atomics, manufacturer of unmanned aerial vehicles deployed around the world, broke ground recently on a \$40 million, 150,000-square-foot complex of buildings at its EI Mirage facility. The 12-month construction phase is expected to include 150 contractors. Local firms are being used where feasible. When complete, the facility will add approximately 30 to 45 new hires, with plans for an additional 200 hires. "I'd like to thank Supervisor Lovingood and the



team at the County for all their hard work in securing the (conditional use permits). We definitely had to work through some

challenges, said Dennis Garegnani, vice president of facilities. "We really appreciate the help."

The largest portion of the project is a 120,754-square-foot hangar. The project is in support of testing of the MQ-9B Long Wing SkyGuardian for the United Kingdom and other international customers. Approximately 2,000 people currently work at General Atomics' EI Mirage facility.



# Most popular social networks

The following list of the leading social networks shows the number of active users as of July 2018.

#	Network Name	Number of Users (in millions)	#	Network Name	Number of Users (in millions)
1	Facebook	2,270	12	Reddit	330
2	YouTube	1,900	13	Baidu Tieba	300
3	WhatsApp	1,500	14	Skype	300
4	Facebook Messenger	1,300	15	LinkedIn	303
5	WeChat	1,040	16	Viber	260
6	Instagram	1,000	17	Snapchat	255
7	QQ	806	18	Line	203
8	QZone	563	19	Discord	200
9	Tik Tok	500	20	Pinterest	291
10	Sina Weibo	411	21	Telegram	200
11	Twitter	330	22	Tinder	100



The face of a greener generation

CR&R Incorporated is committed to improving the environment in which we all live in by providing efficient, effective and cutting edge solid waste and recycling services which not only reduce the impact on our world but also offer sustainable solutions to our most pressing environmental challenges. Our investment in cutting edge technology, aimed at reducing our carbon footprint, started over three decades ago by building what is today a world class recycling infrastructure. While others were investing in landfills to bury trash, we focused on materials processing centers which today help to move thousands of tons of recyclable materials per year. Our investment in Alternative Fuel Vehicles and Fueling Stations also helps to clean up the air throughout Southern California by allowing us to run clean burning natural gas vehicles. Our latest venture includes the construction of a state of the art Anaerobic Digester which will allow us to process organic waste from throughout the region and create a renewable natural gas to fuel our trucks. This will be the cleanest fuel available in California. CR&R Incorporated is dedicated to finding ways to help improve our world by investing in the future; a future we hope will be cleaner, greener and environmentally sustainable.



<http://crrwasteservices.com>





# WELCOME TO

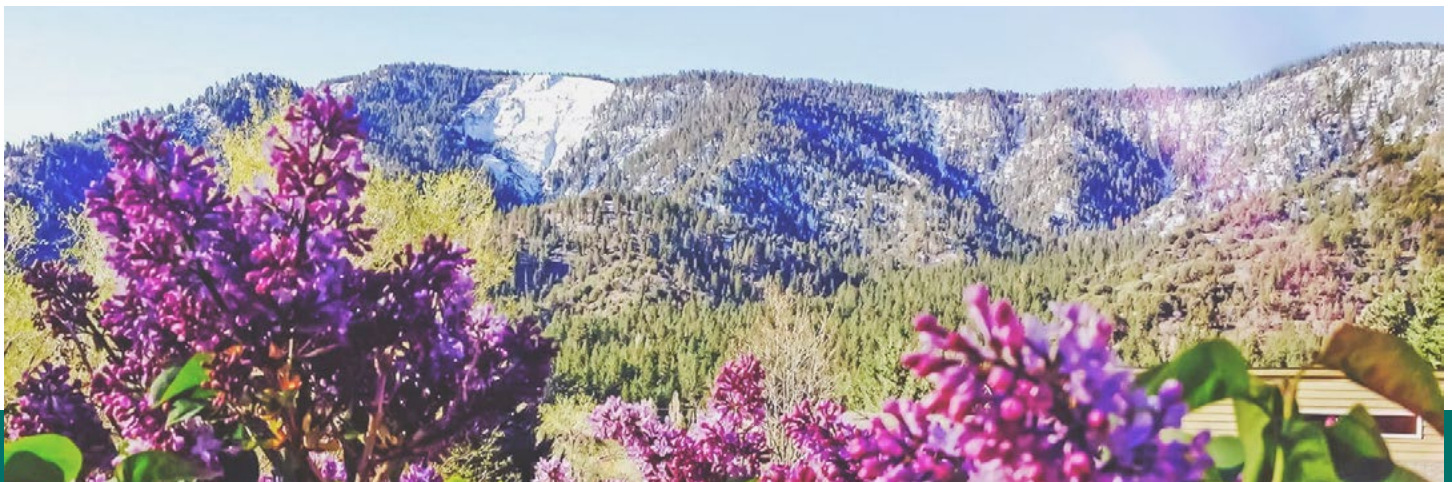
# WRIGHTWOOD CSD

The Wrightwood Community Services District (WCSD) was formed on July 1, 2017 to establish local control of Parks and Recreation, Street Lights, Solid Waste and Waste Water powers. A small portion of property taxes already collected from the San Bernardino County and Los Angeles County are given directly to the WCSD instead of going to the Counties. The board of directors are local Wrightwood residents that are elected by the local community.

The WCSD functions independently from the County of San Bernardino as outlined in Government Code Section 61000.

The Board of Directors normally meets on the first Tuesday of each month at 6:30pm in the Community Building at 1275 Hwy 2.

The District office is open M-Th 8am-1pm and is located within the Community Building.



**Wrightwood Community Services District**

1275 Hwy 2 - P.O. Box 218 - Wrightwood, CA 92397 - Phone (760) 249-3205 - [office@wrightwoodcsd.org](mailto:office@wrightwoodcsd.org)

The Land of Four Seasons

# Wrightwood Chamber of Commerce



## Come to our Mountain Escape

---

Join Wrightwood all year around for our great events and experience the land of four seasons! We love to have tourists, friends and the whole family enjoy themselves here, by having fun and creating new experiences with hopes that they will come visit us again and again for time to come. Our main focus in our town is for people to get away from the hustle and bustle by going on beautiful hikes, seeing the beauty of majestic mountains, enjoying our boutiques, dining at our restaurants which include a variety of cuisines but most of all, we hope that you can relax and feel at home.



## Wrightwood Businesses

---

Here in Wrightwood we have many businesses that offer ranges from Ziplining to great restaurants, accomodation and so much more. We want to promote our businesses because they provide so much for our visitors, our residents and help our community thrive.



What Resources in our community do you take advantage of? Or would like more information on?

RESOURCE     YES         NO    Info

- Schools
- Chamber's of Commerce
- Community Service Districts
- Sheep Creek Water
- RACE Communications
- CR&R
- Utility providers, which ones
- Transition Habitat Conservancy
- Country Services, if yes which ones
- Service Clubs
- Youth Groups
- Local business's
- Mountaineer Progress
- NewsPlus
- Social Media

Any Resources not listed above?

---

---

---

---

Contact info:

Name \_\_\_\_\_

Phone \_\_\_\_\_

E-mail \_\_\_\_\_

# MOVIES ON THE MOUNTAIN



**Join us each month for Movies On The Mountain.**

Movies are FREE select Saturdays beginning at 8:30pm. Bring your favorite chair. Dress warmly or bring a blanket. This month's movie is:

## *Charlie And The Chocolate Factory - 1971*

A sweet boy from a poor family dreams of finding one of five golden tickets hidden inside a chocolate bar which will admit him to the eccentric and reclusive Willy Wonka's magical factory.

**Contact (760) 316-7828 for details**

North Lodge Adventure Center - 1 Table Mountain Road, Llano, CA 93544



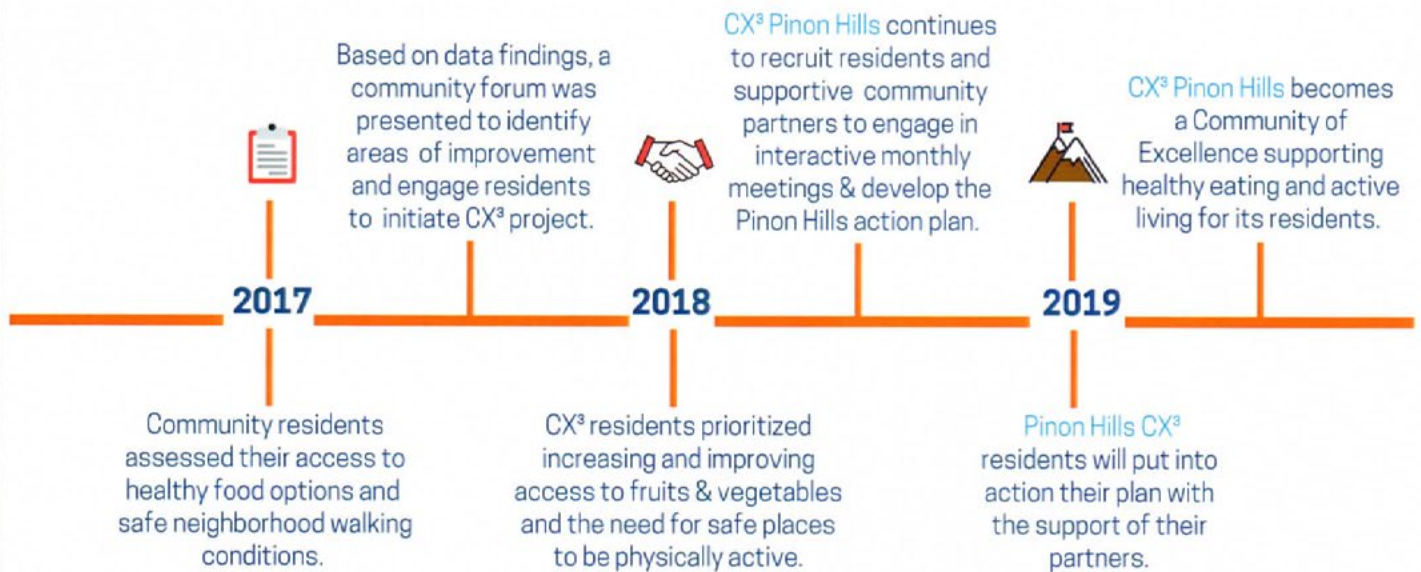
# Communities of Excellence in Nutrition, Physical Activity & Obesity Prevention (CX<sup>3</sup>) PINON HILLS

**CX<sup>3</sup> is a community driven project where residents help to make their neighborhood a healthier place to live, learn, work, shop, play & worship.**

**In CX<sup>3</sup> Pinon Hills we educate and empower residents to become advocates and leaders of their community.**

**As a participant you will:**

- Gain knowledge, skills and tools to advance health change.
- Understand how government decisions are made on a local level.
- Talk to your decision makers to steer policy change.
- Create strong relationships with neighbors and partners.



## Voices from our Champions

**“** I invite people to come because we need more things like this to come to our neighborhood, to better our health. **”**

-Pinon Hills CX<sup>3</sup> Resident

## Get Involved!

### Location:

Pinon Hills Chamber of Commerce  
10405 Mountain Rd., Pinon Hills

### Date:

Third Tuesday  
of the month

### Time:

10:30 a.m - 11:30 a.m

Diana Amaya  
Diana.Amaya@stjoe.org  
760-946-8802



Public Health  
Nutrition



St. Joseph Health  
St. Mary

